

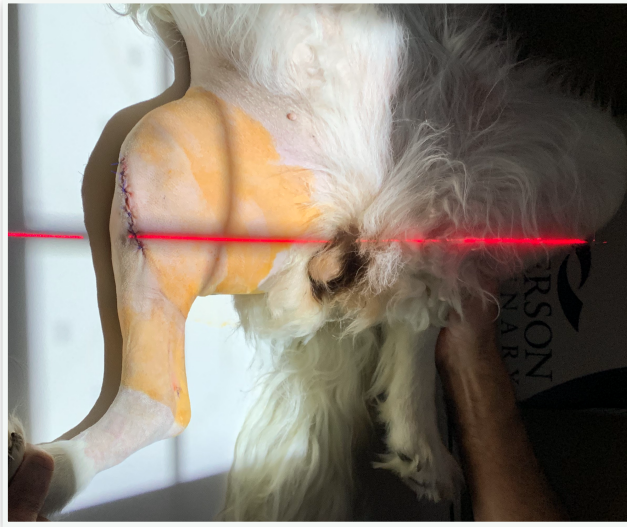
## Positioning for TPLO Films: (under sedation or anesthesia)

### Lateral view:

Place patient over the radiographic beam so that the hip, stifle and tarsus are all resting on the plate/tabletop (if the dog is too big, get as much of the stifle, tarsus in the collimated area). Pull the unaffected leg away (abduct). Position the stifle and tarsus at right angles – 90/90 positioning.

Center the beam on the stifle (tibial tuberosity) or as close to it as possible. Be sure to include the stifle, entire tibia and tarsus in the exposure.

In the radiograph, the femoral condyles should overlap.



### Cranial-Caudal View:

The patient is positioned in dorsal recumbency. Pull the affected limb distal and straight so that the patella points to the sky. Do not twist or rotate the tarsal joint or paw. Center the crosshairs on the stifle again. Include the stifle, entire tibia and tarsus in the exposure. In the radiograph the patella should be centered between both fabella and the fabella should be split by the femur. The medial border of the calcaneus should be aligned with the center of the distal tibia.



**Please obtain a VD and lateral pelvis on all cases.**

